

# TATES

Residential Sales & Lettings

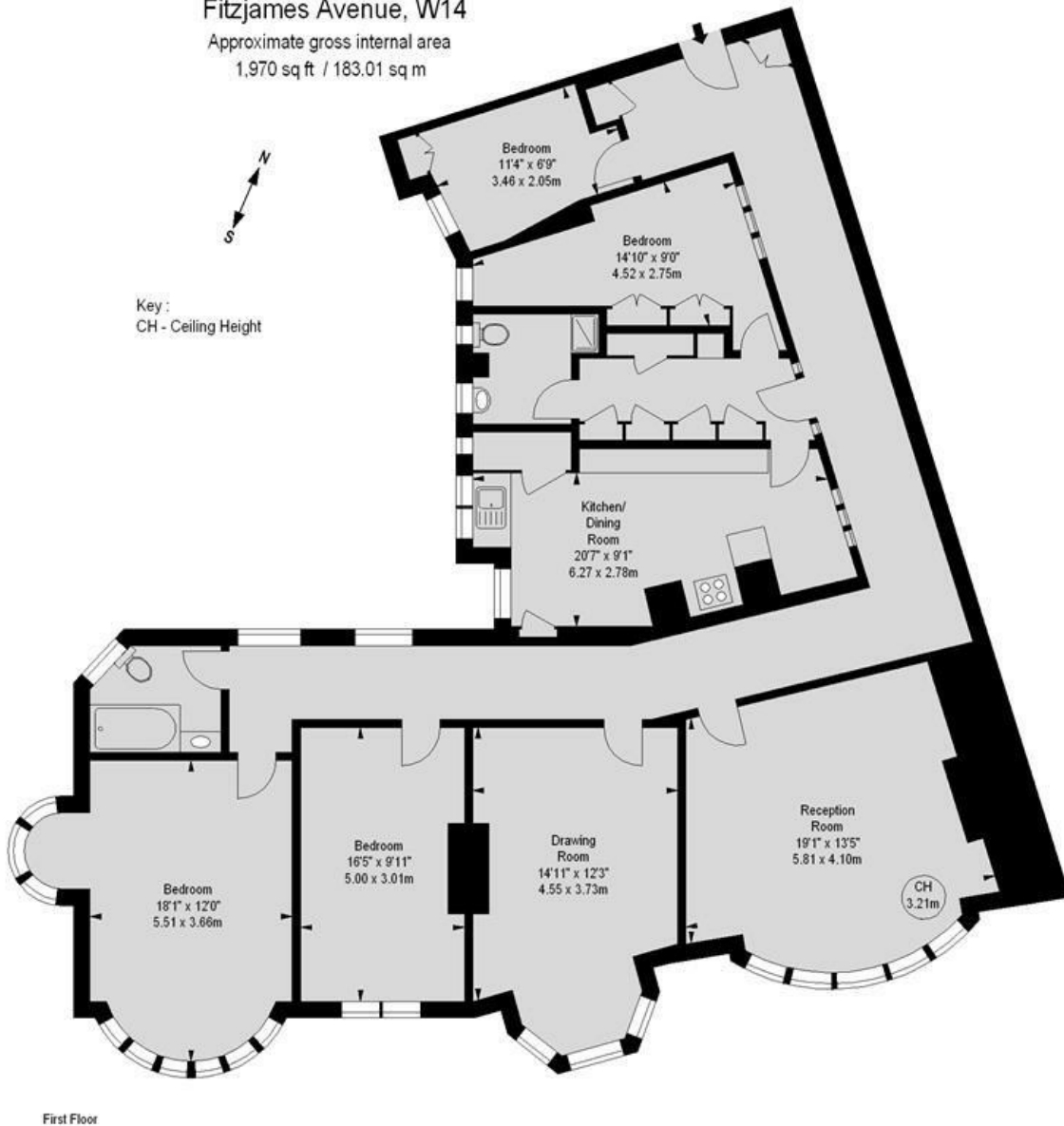


## Fitzjames Avenue, London W14 0RR £1,500,000

- Large Period Apartment
- First Floor
- Share of Freehold
- Barons Court Tube
- Four Bedrooms
- High Ceilings
- Tree Lined Street
- West Kensington Tube

Fitzjames Avenue, W14

Approximate gross internal area  
1,970 sq ft / 183.01 sq m



First Floor

Illustration For Identification Purposes Only. Not To Scale  
\*Floorplan Drawn According To RICS Guidelines

Energy Efficiency Rating		Current	Potential
Very energy efficient - lower running costs			
(92 plus) <b>A</b>			<b>84</b>
(81-91) <b>B</b>		<b>70</b>	
(69-80) <b>C</b>			
(55-68) <b>D</b>			
(39-54) <b>E</b>			
(21-38) <b>F</b>			
(1-20) <b>G</b>			
Not energy efficient - higher running costs			
<b>England &amp; Wales</b>		EU Directive 2002/91/EC	

Whilst these particulars are believed to be correct, no guarantee can be given for the measurements, appliances or services. It is our recommendation that all are tested. These are not intended to form part of any contract. Tates accept no responsibility for their accuracy.

135 Hammersmith Rd London W14 0QL.  
T. 020 7602 6020 F. 020 7602 9522  
mail@tatesestates.co.uk  
tatesestates.co.uk

Tates (Agents) Ltd. Registered in England and Wales No. 2356337  
Registered Office: 4th Floor Imperial House, 15 Kingsway London WC2B 6U

